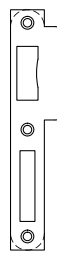
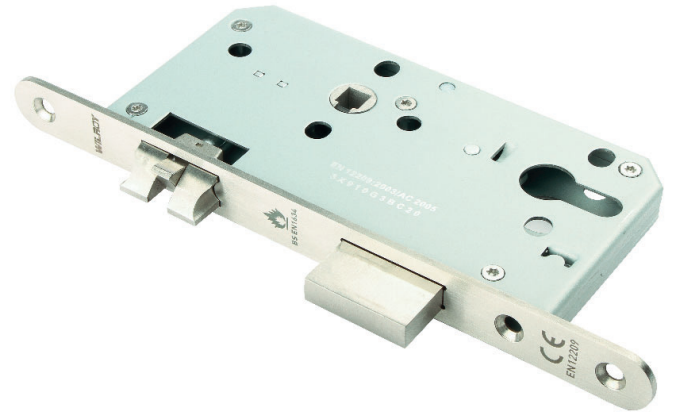


### Application

- European DIN style casing designed for use with Euro profile cylinders.
- Bolt-through fixing holes for security handles and roses.
- SECC galvanized steel lockcase assembled with stainless steel 304 Torx screws.
- Heavily sprung latch follower made from stainless steel 304 allowing the use of heavy unsprung door furniture.
- Latch follower equipped with spindle grip feature that reduces door rattle.
- Double throw deadbolt made from stainless steel 304 extending 20.5 mm when key is turned twice.
- Split latch technology for silent door closing.
- Easily reversible split latch made from stainless steel 304 allows quick on-site handing.
- Forend made from 3 mm thick stainless steel 304, available in 20/22/24 mm widths with straight or rounded corners (specify size and type).
- Cylinder-to-latch functionality.
- Supplied with clear plastic splinter guard for improved esthetics (white or black available upon request).
- Supplied with strike plate made from stainless steel 304.
- Supplied with grade 304 stainless steel fixing screws for timber doors (metal door screws available upon request).



CE Classification

3X910G3BC20



### Operation

From the inside:

- Latch withdrawn by lever handle/knob.
- Deadbolt operated by cylinder key/thumbturn.
- Latch retracted on a second turn of the cylinder.

From the outside:

- Latch withdrawn by lever handle/knob.
- Deadbolt operated by cylinder key/thumbturn.
- Latch retracted on a second turn of the cylinder.

### Specification

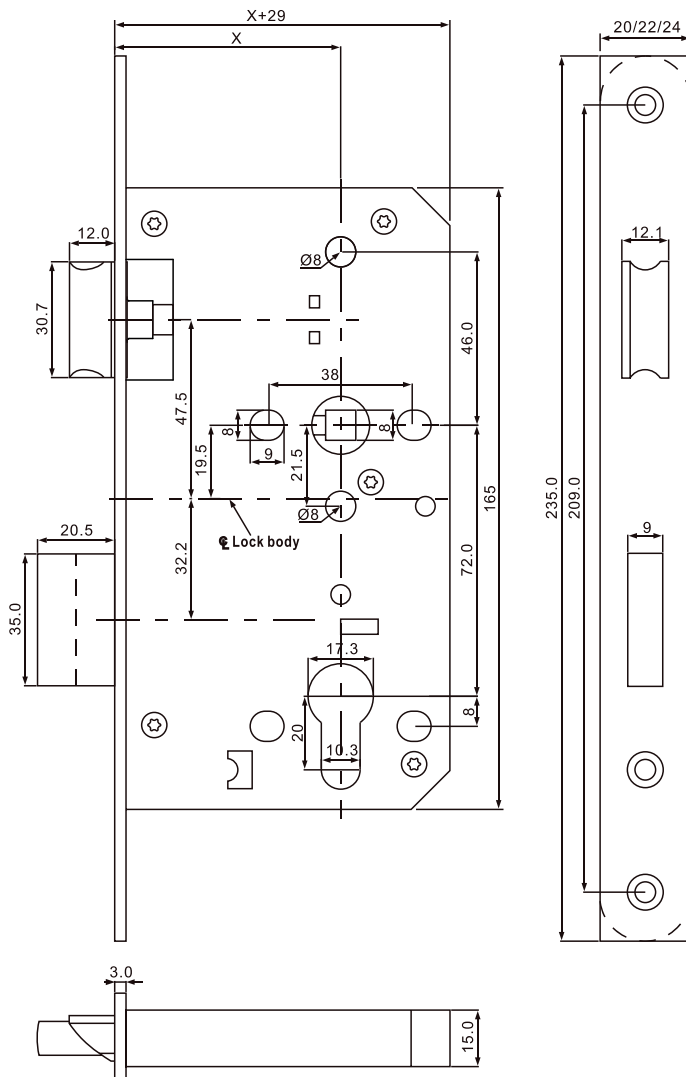
<b>Center Distance</b>	72 mm
<b>Backset Size</b>	55/60/65 mm
<b>Follower</b>	8 x 8 mm
<b>Follower Material</b>	Stainless Steel 304
<b>Deadbolt</b>	20.5 mm double throw
<b>Deadbolt Material</b>	Stainless Steel 304
<b>Latch Type</b>	Silent Latch
<b>Latch Material</b>	Stainless Steel 304
<b>Lockcase Thickness</b>	15 mm
<b>Lockcase Material</b>	SECC Galvanized Steel
<b>Forend Length</b>	235 mm
<b>Forend</b>	20/22/24 mm with straight or round corners
<b>Forend Thickness</b>	3 mm
<b>Forend Material</b>	Stainless steel 304
<b>Strike Plate Thickness</b>	1.5 mm
<b>Strike Plate Material</b>	Stainless Steel 304
<b>Packaging</b>	20 Units per Carton

## Certification

- 10 year warranty: The performance of this product and all its variants is covered by Wilroy's hassle-free warranty.
- CE marked and fully tested to EN 12209:2003.
- CE marked and fully tested to EN 1634-1:2014 for suitability of use on fire doors.
- Fully compliant with DIN 18251.

Digit	Grade	Description
1 <sup>st</sup>	3	Designed for use by the public where there is little incentive to exercise care and where there is a high chance of misuse. This is the highest possible grade according to EN 12209:2003 standards.
2 <sup>nd</sup>	X	Passed 200,000 test cycles with a 120 N force applied to the latch bolt while it is being withdrawn. This is the highest possible grade according to EN 12209:2003 standards.
3 <sup>rd</sup>	9	Designed for doors with mass above 200 kg and closes with a force of 15 N from a standing start. This is the highest possible grade according to EN 12209:2003 standards.
4 <sup>th</sup>	1	Suitable and approved for use on fire/smoke door assemblies. Tested according to EN 1634-1:2014 standards, and achieved fire resistance of 260 minutes on steel fire doors and 111 minutes on timber fire doors.
6 <sup>th</sup>	G	Very high corrosion resistance (240 hours NSS salt spray testing) satisfying the temperature requirement from -10 °C to +60 °C. This is the highest possible grade according to EN 12209:2003 standards.

## Technical Design



## Finishes

- AB - Antique Brass
- AC - Antique Copper
- BP - Matted Black
- GM - Gun Metal
- PB - Polished Brass
- PN - Polished Nickel
- PS - Polished Stainless Steel
- RG - Rose Gold
- SB - Satin Brass
- SN - Satin Nickel
- SS - Satin Stainless Steel

SPS72			
Catalog Part#	Backset (mm)	Lockcase Depth (mm)	Forend
SPS725520C	55	84	20 mm with Round Corners
SPS725520D	55	84	20 mm with Straight Corners
SPS725522C	55	84	22 mm with Round Corners
SPS725522D	55	84	22 mm with Straight Corners
SPS725524C	55	84	24 mm with Round Corners
SPS725524D	55	84	24 mm with Straight Corners
SPS726020C	60	89	20 mm with Round Corners
SPS726020D	60	89	20 mm with Straight Corners
SPS726022C	60	89	22 mm with Round Corners
SPS726022D	60	89	22 mm with Straight Corners
SPS726024C	60	89	24 mm with Round Corners
SPS726024D	60	89	24 mm with Straight Corners
SPS726520C	65	94	20 mm with Round Corners
SPS726520D	65	94	20 mm with Straight Corners
SPS726522C	65	94	22 mm with Round Corners
SPS726522D	65	94	22 mm with Straight Corners
SPS726524C	65	94	24 mm with Round Corners
SPS726524D	65	94	24 mm with Straight Corners