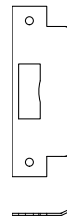
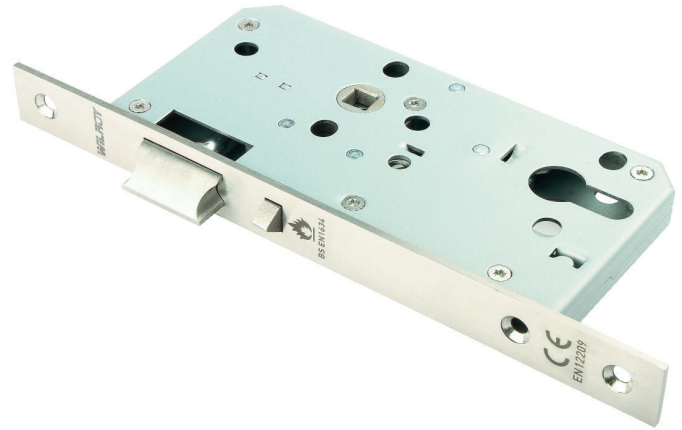


### Application

- European DIN style casing designed for use with Euro profile cylinders.
- Bolt-through fixing holes for security handles and roses.
- SECC galvanized steel lockcase assembled with stainless steel 304 Torx screws.
- Heavily sprung latch follower made from stainless steel 304 allowing the use of heavy unsprung door furniture.
- Latch follower equipped with spindle grip feature that reduces door rattle.
- Easily reversible latch made from stainless steel 304 allows quick on-site handing.
- Safety latch (snib) made from stainless steel 304.
- Forend made from 3 mm thick stainless steel 304, available in 20/22/24 mm widths with straight or rounded corners (specify size and type).
- Cylinder-to-latch functionality.
- Supplied with clear plastic splinter guard for improved esthetics (white or black available upon request).
- Supplied with strike plate made from stainless steel 304.
- Supplied with grade 304 stainless steel fixing screws for timber doors (metal door screws available upon request).



CE Classification

3X910G2BB20



### Operation

From the inside:

- Latch withdrawn by using lever handle/knob.
- Cannot be deadlocked from the inside.

From the outside:

- Door can only be deadlocked from the outside.
- Latch withdrawn by lever handle/knob or cylinder key.
- When the door is closed and the latch is deadlocked, a key must be used for re-entry.

### Specification

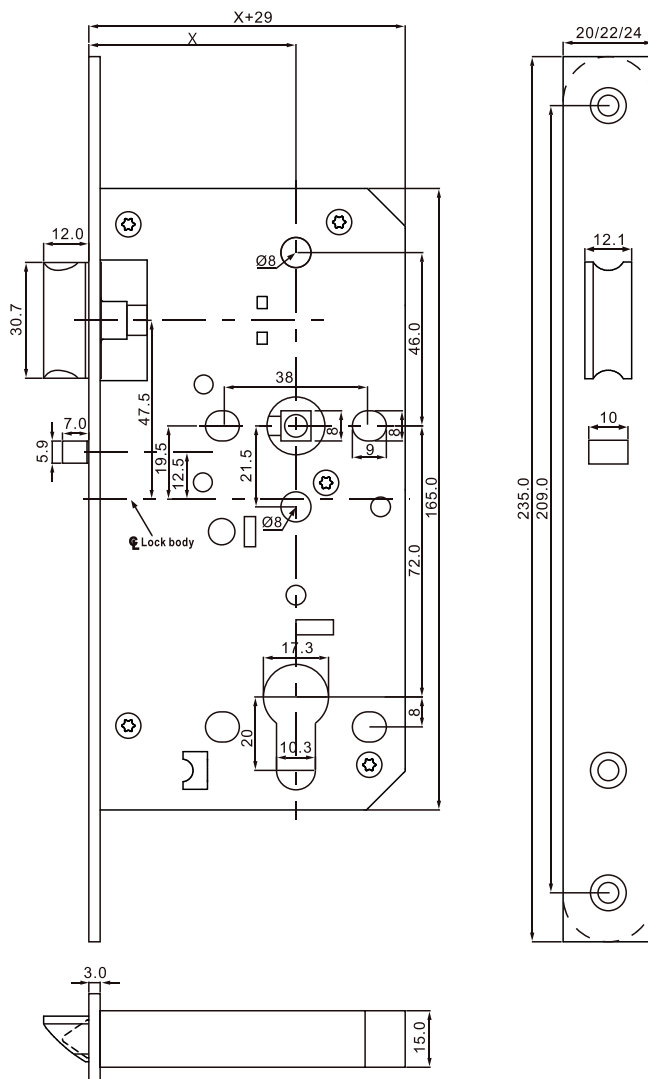
<b>Center Distance</b>	72 mm
<b>Backset Size</b>	55 mm
<b>Follower</b>	8 x 8 mm
<b>Follower Material</b>	Stainless Steel 304
<b>Deadbolt</b>	No deadbolt
<b>Deadbolt Material</b>	N/A
<b>Latch Type</b>	Reversible Latch
<b>Latch Material</b>	Stainless Steel 304
<b>Lockcase Thickness</b>	15 mm
<b>Lockcase Material</b>	SECC Galvanized Steel
<b>Forend Length</b>	235 mm
<b>Forend</b>	20/22/24 mm with straight or round corners
<b>Forend Thickness</b>	3 mm
<b>Forend Material</b>	Stainless steel 304
<b>Strike Plate Thickness</b>	1.5 mm
<b>Strike Plate Material</b>	Stainless Steel 304
<b>Packaging</b>	20 Units per Carton

## Certification

- 10 year warranty: The performance of this product and all its variants is covered by Wilroy's hassle-free warranty.
- CE marked and fully tested to EN 12209:2003.
- CE marked and fully tested to EN 1634-1:2014 for suitability of use on fire doors.
- Fully compliant with DIN 18251.

Digit	Grade	Description
1 <sup>st</sup>	3	Designed for use by the public where there is little incentive to exercise care and where there is a high chance of misuse. This is the highest possible grade according to EN 12209:2003 standards.
2 <sup>nd</sup>	X	Passed 200,000 test cycles with a 120 N force applied to the latch bolt while it is being withdrawn. This is the highest possible grade according to EN 12209:2003 standards.
3 <sup>rd</sup>	9	Designed for doors with mass above 200 kg and closes with a force of 15 N from a standing start. This is the highest possible grade according to EN 12209:2003 standards.
4 <sup>th</sup>	1	Suitable and approved for use on fire/smoke door assemblies. Tested according to EN 1634-1:2014 standards, and achieved fire resistance of 260 minutes on steel fire doors and 111 minutes on timber fire doors.
6 <sup>th</sup>	G	Very high corrosion resistance (240 hours NSS salt spray testing) satisfying the temperature requirement from -10 °C to +60 °C. This is the highest possible grade according to EN 12209:2003 standards.

## Technical Design



## Finishes

- AB - Antique Brass
- AC - Antique Copper
- BP - Matted Black
- GM - Gun Metal
- PB - Polished Brass
- PN - Polished Nickel
- PS - Polished Stainless Steel
- RG - Rose Gold
- SB - Satin Brass
- SN - Satin Nickel
- SS - Satin Stainless Steel

## VARIANTS

FPC72			
Catalog Part#	Backset (mm)	Lockcase Depth (mm)	Forend
FPC725520C	55	84	20 mm with Round Corners
FPC725520D	55	84	20 mm with Straight Corners
FPC725522C	55	84	22 mm with Round Corners
FPC725522D	55	84	22 mm with Straight Corners
FPC725524C	55	84	24 mm with Round Corners
FPC725524D	55	84	24 mm with Straight Corners