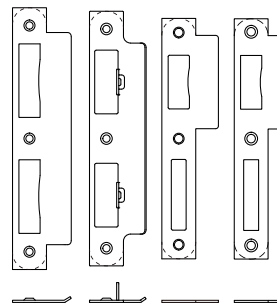
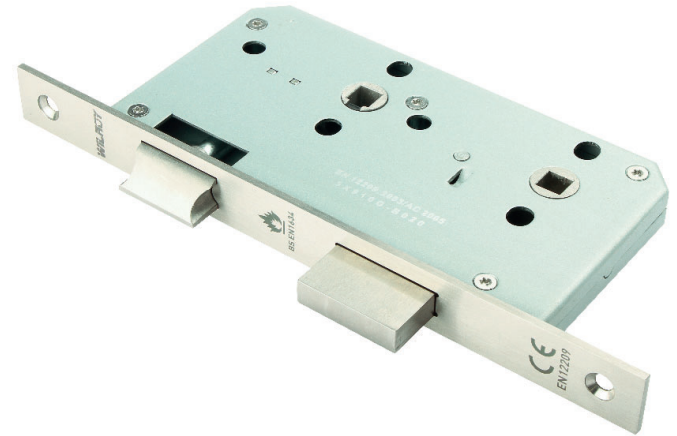


### Application

- European DIN style casing designed for use with privacy turn and emergency release.
- Bolt-through fixing holes for security handles and roses.
- SECC galvanized steel lockcase assembled with stainless steel 304 Torx screws.
- Heavily sprung latch follower made from stainless steel 304 allowing the use of heavy unsprung door furniture.
- Latch follower equipped with spindle grip feature that reduces door rattle.
- 8 mm x 8 mm thumbturn follower made from stainless steel 304.
- Single throw deadbolt made from stainless steel 304 extending 20.5 mm when key is turned once.
- Easily reversible latch made from stainless steel 304 allows quick on-site handing.
- Forend made from 3 mm thick stainless steel 304, available in 20/22/24 mm widths with straight or rounded corners (specify size and type).
- Supplied with clear plastic splinter guard for improved esthetics (white or black available upon request).
- Supplied with strike plate made from stainless steel 304 (specify type).
- Supplied with grade 304 stainless steel fixing screws for timber doors (metal door screws available upon request).



CE Classification

3X910G-B020



### Operation

From the inside:

- Latch withdrawn by lever handle/knob.
- Deadbolt operated by privacy thumbturn.

From the outside:

- Latch withdrawn by lever handle/knob.
- Deadbolt can be unlocked with a coin (or straight screw-driver tip) operated emergency release, sold separately.

### Specification

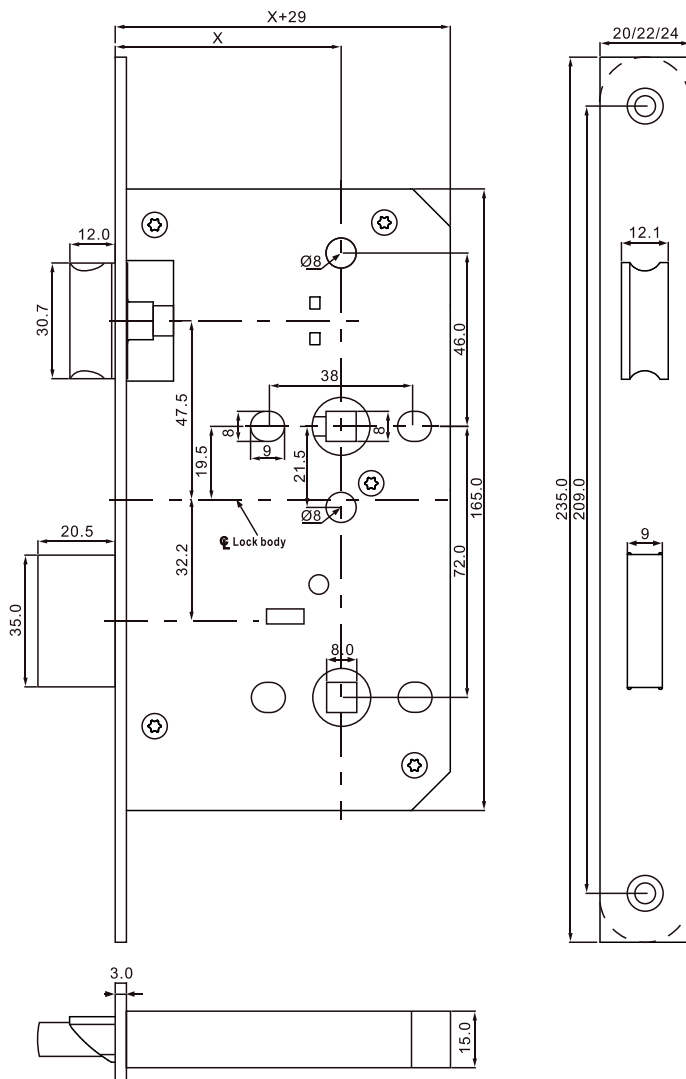
|                               |                                            |
|-------------------------------|--------------------------------------------|
| <b>Center Distance</b>        | 72 mm                                      |
| <b>Backset Size</b>           | 60 mm                                      |
| <b>Follower</b>               | 8 x 8 mm                                   |
| <b>Follower Material</b>      | Stainless Steel 304                        |
| <b>Deadbolt</b>               | 20.5 mm single throw                       |
| <b>Deadbolt Material</b>      | Stainless Steel 304                        |
| <b>Latch Type</b>             | Reversible Latch                           |
| <b>Latch Material</b>         | Stainless Steel 304                        |
| <b>Lockcase Thickness</b>     | 15 mm                                      |
| <b>Lockcase Material</b>      | SECC Galvanized Steel                      |
| <b>Forend Length</b>          | 235 mm                                     |
| <b>Forend</b>                 | 20/22/24 mm with straight or round corners |
| <b>Forend Thickness</b>       | 3 mm                                       |
| <b>Forend Material</b>        | Stainless steel 304                        |
| <b>Strike Plate Thickness</b> | 1.5 mm                                     |
| <b>Strike Plate Material</b>  | Stainless Steel 304                        |
| <b>Packaging</b>              | 20 Units per Carton                        |

## Certification

- 10 year warranty: The performance of this product and all its variants is covered by Wilroy's hassle-free warranty.
- CE marked and fully tested to EN 12209:2003.
- CE marked and fully tested to EN 1634-1:2014 for suitability of use on fire doors.

| Digit           | Grade | Description                                                                                                                                                                                                      |
|-----------------|-------|------------------------------------------------------------------------------------------------------------------------------------------------------------------------------------------------------------------|
| 1 <sup>st</sup> | 3     | Designed for use by the public where there is little incentive to exercise care and where there is a high chance of misuse. This is the highest possible grade according to EN 12209:2003 standards.             |
| 2 <sup>nd</sup> | X     | Passed 200,000 test cycles with a 120 N force applied to the latch bolt while it is being withdrawn. This is the highest possible grade according to EN 12209:2003 standards.                                    |
| 3 <sup>rd</sup> | 9     | Designed for doors with mass above 200 kg and closes with a force of 15 N from a standing start. This is the highest possible grade according to EN 12209:2003 standards.                                        |
| 4 <sup>th</sup> | 1     | Suitable and approved for use on fire/smoke door assemblies. Tested according to EN 1634-1:2014 standards, and achieved fire resistance of 260 minutes on steel fire doors and 111 minutes on timber fire doors. |
| 6 <sup>th</sup> | G     | Very high corrosion resistance (240 hours NSS salt spray testing) satisfying the temperature requirement from -10 °C to +60 °C. This is the highest possible grade according to EN 12209:2003 standards.         |

## Technical Design



## Finishes

- AB - Antique Brass
- AC - Antique Copper
- BP - Matted Black
- GM - Gun Metal
- PB - Polished Brass
- PN - Polished Nickel
- PS - Polished Stainless Steel
- RG - Rose Gold
- SB - Satin Brass
- SN - Satin Nickel
- SS - Satin Stainless Steel

## VARIANTS

| FPB72         |              |                     |                             |
|---------------|--------------|---------------------|-----------------------------|
| Catalog Part# | Backset (mm) | Lockcase Depth (mm) | Forend                      |
| FPB726020C    | 60           | 89                  | 20 mm with Round Corners    |
| FPB726020D    | 60           | 89                  | 20 mm with Straight Corners |
| FPB726022C    | 60           | 89                  | 22 mm with Round Corners    |
| FPB726022D    | 60           | 89                  | 22 mm with Straight Corners |
| FPB726024C    | 60           | 89                  | 24 mm with Round Corners    |
| FPB726024D    | 60           | 89                  | 24 mm with Straight Corners |