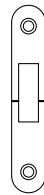


# FHS SERIES

## Fire Rated Stainless Steel 304 Lock For Sliding Doors

### Application

- European DIN style casing designed for use with Euro profile cylinders.
- Bolt-through fixing holes for pull handles.
- SECC galvanized steel lockcase assembled with stainless steel 304 Torx screws.
- Hook bolt made from stainless steel 304.
- Forend made from 3 mm thick stainless steel 304, available in 16 mm width with round corners (possible other sizes and styles, minimums apply).
- Supplied with clear plastic splinter guard for improved esthetics (white or black available upon request).
- Supplied with strike plate made from stainless steel 304.
- Supplied with grade 304 stainless steel fixing screws for wood doors (metal door screws available upon request).



CE Classification

3X910G0BA00



### Operation

From the inside:

- Hook locked and unlocked using cylinder key/thumbturn.

From the outside:

- Hook locked and unlocked using cylinder key/thumbturn.

### Specification

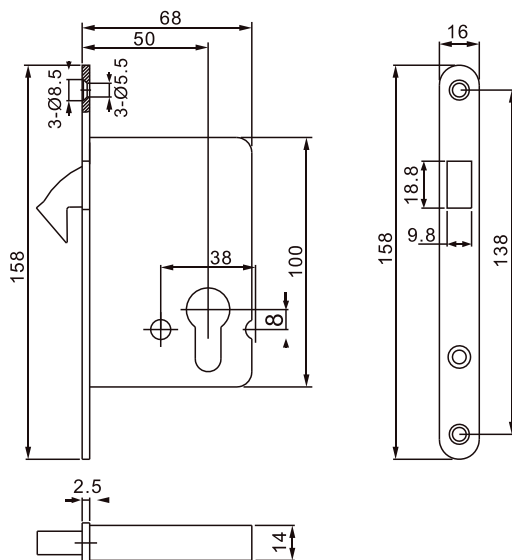
<b>Center Distance</b>	N/A
<b>Backset Size</b>	50 mm
<b>Follower</b>	No Follower
<b>Follower Material</b>	N/A
<b>Deadbolt</b>	No deadbolt
<b>Deadbolt Material</b>	N/A
<b>Latch Type</b>	Sliding Door Hook
<b>Latch Material</b>	Stainless Steel 304
<b>Lockcase Thickness</b>	14 mm
<b>Lockcase Material</b>	SECC Galvanized Steel
<b>Forend Length</b>	158 mm
<b>Forend</b>	16 mm with round corners
<b>Forend Thickness</b>	2.5 mm
<b>Forend Material</b>	Stainless steel 304
<b>Strike Plate Thickness</b>	2.5 mm
<b>Strike Plate Material</b>	Stainless Steel 304
<b>Packaging</b>	30 Units per Carton

## Certification

- 10 year warranty: The performance of this product and all its variants is covered by Wilroy's hassle-free warranty.
- CE marked and fully tested to EN 12209:2003.
- CE marked and fully tested to EN 1634-1:2014 for suitability of use on fire doors.
- Fully compliant with DIN 18251.

Digit	Grade	Description
1 <sup>st</sup>	3	Designed for use by the public where there is little incentive to exercise care and where there is a high chance of misuse. This is the highest possible grade according to EN 12209:2003 standards.
2 <sup>nd</sup>	X	Passed 200,000 test cycles with a 120 N force applied to the latch bolt while it is being withdrawn. This is the highest possible grade according to EN 12209:2003 standards.
3 <sup>rd</sup>	9	Designed for doors with mass above 200 kg and closes with a force of 15 N from a standing start. This is the highest possible grade according to EN 12209:2003 standards.
4 <sup>th</sup>	1	Suitable and approved for use on fire/smoke door assemblies. Tested according to EN 1634-1:2014 standards, and achieved fire resistance of 260 minutes on steel fire doors and 111 minutes on timber fire doors.
6 <sup>th</sup>	G	Very high corrosion resistance (240 hours NSS salt spray testing) satisfying the temperature requirement from -10 °C to +60 °C. This is the highest possible grade according to EN 12209:2003 standards.

## Technical Design



## Finishes

- AB - Antique Brass
- AC - Antique Copper
- BP - Matted Black
- GM - Gun Metal
- PB - Polished Brass
- PN - Polished Nickel
- PS - Polished Stainless Steel
- RG - Rose Gold
- SB - Satin Brass
- SN - Satin Nickel
- SS - Satin Stainless Steel

## VARIANTS

FHS50			
Catalog Part#	Backset (mm)	Lockcase Depth (mm)	Forend
FHS5016C	50	68	16 mm with Round Corners