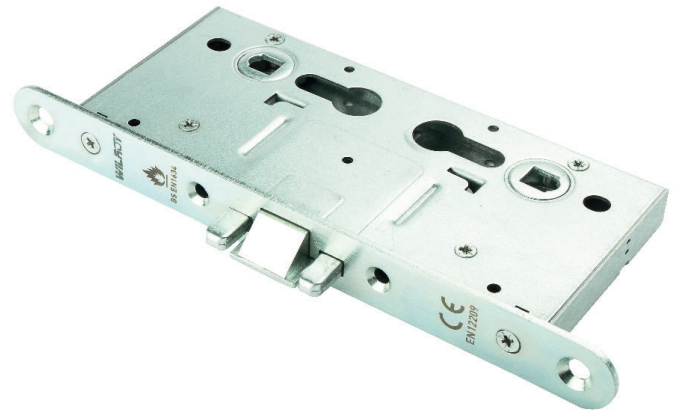


Application

- European DIN style casing designed for use with Euro profile cylinders.
- Reversible case with 72 mm distance.
- SECC galvanized steel lockcase assembled with stainless steel 304 Torx screws.
- Heavily sprung latch follower made from stainless steel 304 allowing the use of heavy unsprung door furniture.
- Latch follower equipped with spindle grip feature that reduces door rattle.
- Single throw deadbolt made from stainless steel 304 extending 14 mm when key is turned once.
- 12 mm Split latch made from stainless steel 304.
- Forend made from 3 mm thick stainless steel 304, available in 24 mm width with rounded corners (possible other sizes and styles, minimums apply).
- Cylinder-to-latch functionality.
- Supplied with clear plastic splinter guard for improved esthetics (white or black available upon request).
- Supplied without strike plate.
- Supplied with grade 304 stainless steel fixing screws for timber doors (metal door screws available upon request).



CE Classification

3X910G3BA20



Operation

From the inside:

- Latch and deadbolt are withdrawn simultaneously by using the lever handle/knob.
- If unlocked, only the latch is retracted.
- Deadbolt operated by the cylinder key/thumbturn.

From the outside:

- Lock operated by cylinder key/thumbturn.

Specification

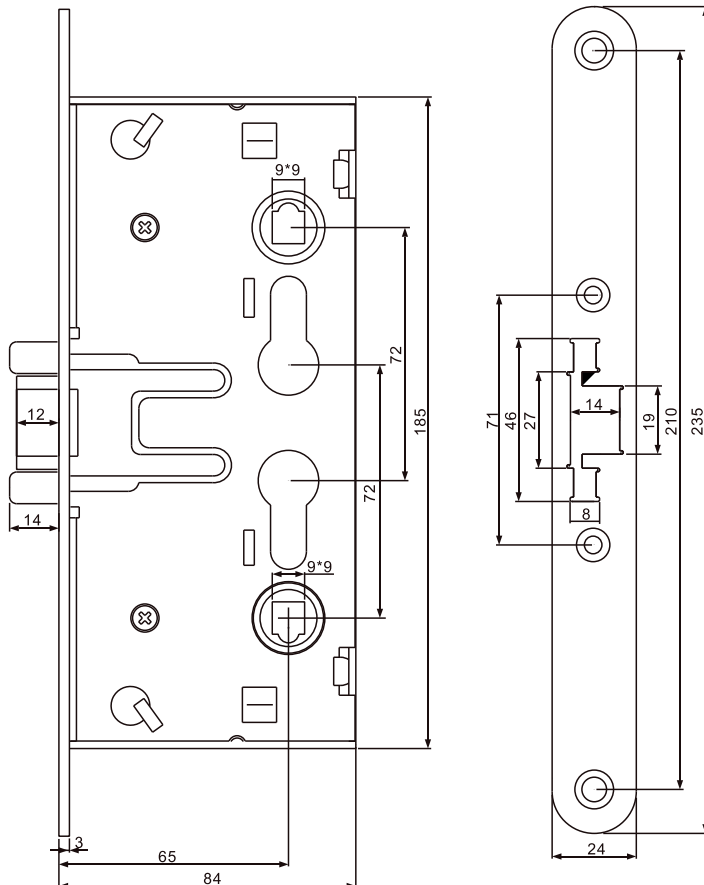
Center Distance	72 mm
Backset Size	65 mm
Follower	9 x 9 mm
Follower Material	Stainless Steel 304
Deadbolt	14 mm single throw twin bolt
Deadbolt Material	Stainless Steel 304
Latch Type	Split Latch
Latch Material	Stainless Steel 304
Lockcase Thickness	15 mm
Lockcase Material	SECC Galvanized Steel
Forend Length	235 mm
Forend	24 mm with round corners
Forend Thickness	3 mm
Forend Material	Stainless steel 304
Strike Plate Thickness	N/A
Strike Plate Material	N/A
Packaging	20 Units per Carton

Certification

- 10 year warranty: The performance of this product and all its variants is covered by Wilroy's hassle-free warranty.
- Fully tested to EN 12209:2003.
- Fully tested to EN 1634-1:2014 for suitability of use on fire doors.

Digit	Grade	Description
1 st	3	Designed for use by the public where there is little incentive to exercise care and where there is a high chance of misuse. This is the highest possible grade according to EN 12209:2003 standards.
2 nd	X	Passed 200,000 test cycles with a 120 N force applied to the latch bolt while it is being withdrawn. This is the highest possible grade according to EN 12209:2003 standards.
3 rd	9	Designed for doors with mass above 200 kg and closes with a force of 15 N from a standing start. This is the highest possible grade according to EN 12209:2003 standards.
4 th	1	Suitable and approved for use on fire/smoke door assemblies. Tested according to EN 1634-1:2014 standards, and achieved fire resistance of 260 minutes on steel fire doors and 111 minutes on timber fire doors.
6 th	G	Very high corrosion resistance (240 hours NSS salt spray testing) satisfying the temperature requirement from -10 °C to +60 °C. This is the highest possible grade according to EN 12209:2003 standards.

Technical Design



Finishes

- AB - Antique Brass
- AC - Antique Copper
- BP - Matted Black
- GM - Gun Metal
- PB - Polished Brass
- PN - Polished Nickel
- PS - Polished Stainless Steel
- RG - Rose Gold
- SB - Satin Brass
- SN - Satin Nickel
- SS - Satin Stainless Steel

VARIANTS

FDC72			
Catalog Part#	Backset (mm)	Lockcase Depth (mm)	Forend
FDC726524C	65	84	24 mm with Round Corners