

# RG SERIES

## RG Series 105° Two-way Soft Closing Concealed Hinge (Cam Adjustable)



### Specification

<b>Opening Angle</b>	105°
<b>Function</b>	Soft Close
<b>Plate Type</b>	Clip On
<b>Cup Depth</b>	11.5 mm
<b>Cup Diameter</b>	35 mm
<b>Drilling Distance</b>	3 mm - 7 mm
<b>Door Thickness</b>	14 mm - 22 mm
<b>Material</b>	Cold Rolled Steel
<b>Height Adjustment Range</b>	Plate Adjustment
<b>Overlay Adjustment Range</b>	6 mm
<b>Depth Adjustment Range</b>	3.8 mm
<b>Finish</b>	Copper Nickel
<b>Packaging</b>	200 Units per Carton

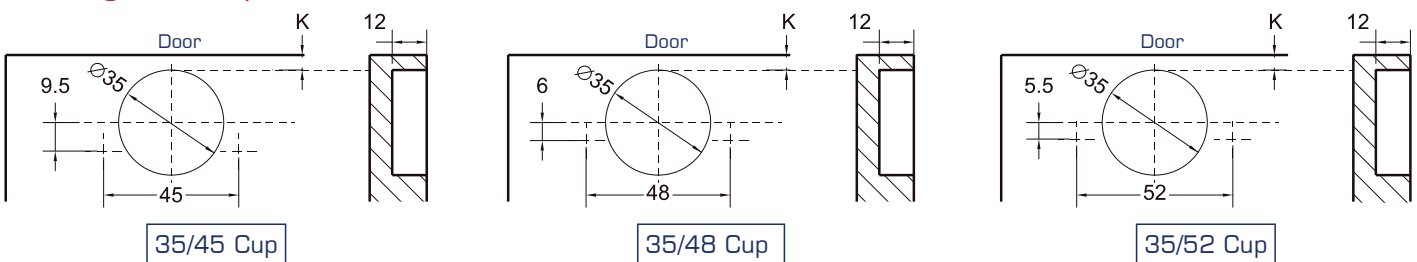
### Notable Features

- Heavy duty product.
- 1Way+ technology extending the service life of the hinge.



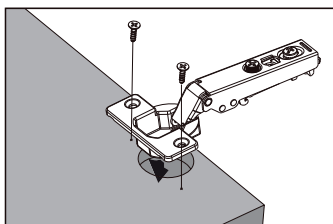
**Additional Options:** 1P - Individual Hinge, Caps for Arm and Cup, Mounting Plate and Screws in Sealed Bag  
 2P - Pair of Hinges, Caps for Arm and Cup, Mounting Plates and Screws in Sealed Bag  
 ND - No Damper  
 NS - No Spring

### Drilling For Cup



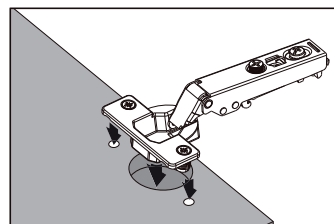
### Cup Installation

#### Screw-on



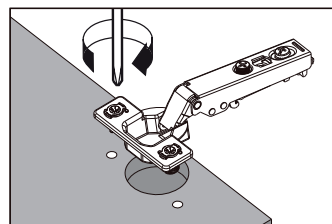
<b>Installation Method</b>	<b>Code</b>
Wood Screws	S2
Euro Screws	S4

#### Press-in



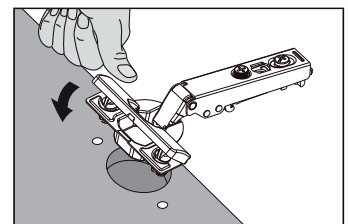
<b>Installation Method</b>	<b>Code</b>
8 mm Dowels	K5
10 mm Dowels	K6

#### LIGO



<b>Installation Method</b>	<b>Code</b>
8 mm Dowels	E5
10 mm Dowels	E6

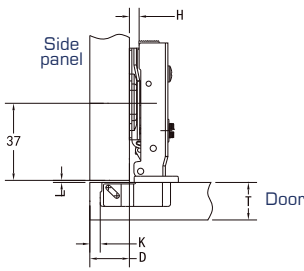
#### VELOX



<b>Installation Method</b>	<b>Code</b>
8 mm Dowels	Z5

## Overlay Table

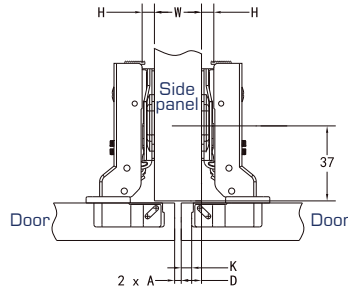
### Full Overlay



$$H = 14 + K - D$$

D \ K	3	4	5	6	7
0	17	18	19	20	21
2	15	16	17	18	19
4	13	14	15	16	17

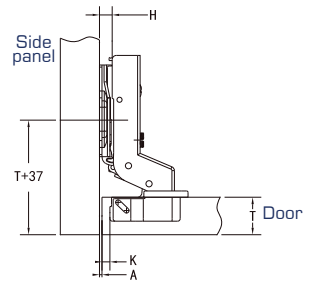
### Half Overlay



$$H = 4 + K - D$$

D \ K	3	4	5	6	7
0	7	8	9	10	11
2	5	6	7	8	9
4	3	4	5	6	7

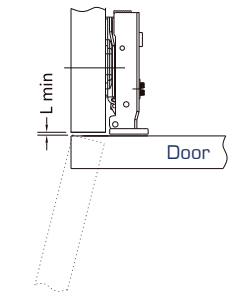
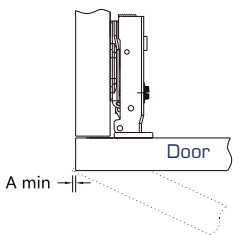
### Inset



$$H = -4 + K + A$$

A \ K	3	4	5	6	7
0	1	0	-1	-2	-3
2	3	2	1	0	-1
4	5	4	3	2	1

## Minimum Reveal Table



A \ K	14	15	16	17	18	19	20	21	22
3	0.3	0.5	0.7	0.9	1.2	1.5	1.8	2.2	2.6
4	0.3	0.5	0.7	0.9	1.1	1.4	1.8	2.1	2.5
5	0.2	0.4	0.6	0.9	1.1	1.4	1.7	2.0	2.4
6	0.2	0.4	0.6	0.8	1.1	1.3	1.6	2.0	2.4
7	0.2	0.4	0.5	0.8	1.0	1.3	1.6	1.9	2.3

L \ K	14	15	16	17	18	19	20	21	22
3	1.0	1.0	1.0	1.0	1.0	1.0	1.0	1.0	1.0
4	1.0	1.0	1.0	1.0	1.0	1.0	1.0	1.0	1.2
5	1.0	1.0	1.0	1.0	1.0	1.3	1.5	1.8	2.0
6	1.0	1.3	1.5	1.8	2.0	2.3	2.5	2.8	3.0
7	2.0	2.3	2.5	2.7	3.0	3.2	3.5	3.7	3.9

K = Boring distance

T = Door thickness

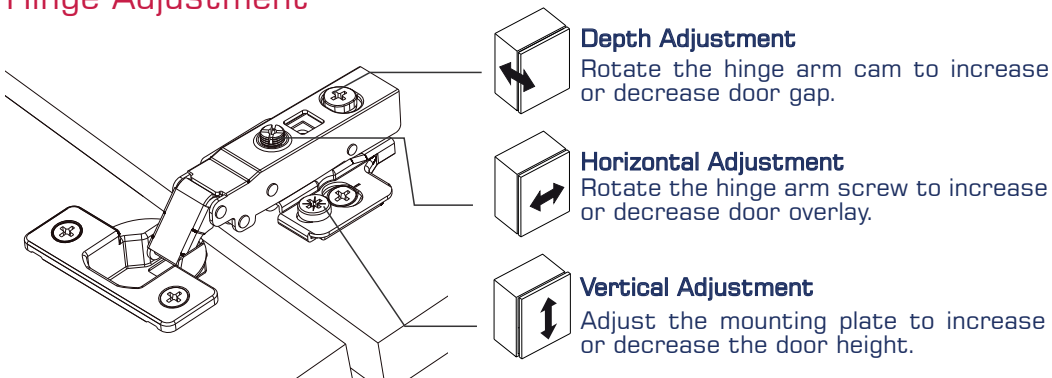
A = Minimum gap (A) for door with a door edge radius

L = Gap between door and panel

### Note:

The minimum parameters in the reveal tables are based on doors with straight, square edges. A rounded or beveled profile will change the minimum reveal required.

## Hinge Adjustment



### Depth Adjustment

Rotate the hinge arm cam to increase or decrease door gap.

### Horizontal Adjustment

Rotate the hinge arm screw to increase or decrease door overlay.

### Vertical Adjustment

Adjust the mounting plate to increase or decrease the door height.

### Note:

The referenced adjustment range described is the product design range. The actual design of the cabinet and the drilling method may have a certain impact on the parameters.

Plate Options: DS TS FP FS FM FN YD YS YT YP